

# GSES TEACHER/STAFF FAVORITE THINGS!

ANA LISA PAQUE

MAY 17



## FAVORITE RESTAURANTS

SURIN, CHIC FIL A,  
TORTORAS,  
MUDSLINGERS,  
DUTCH BROS



## FAVORITE STORES

SWEET  
PINEAPPLE/TARGET  
FOR MYSELF,  
TARGET/AMAZON FOR  
CLASSROOM



## FAVORITE PASS TIMES: READING AND TRAVELING

### FAVORITE SNACKS

MILK CHOCOLATE FLIPZ  
PRETZELS, SLIM JIMS



### FAVORITE CANDY

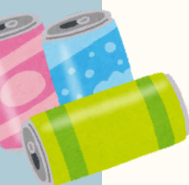
FLAVORED STARBURSTS,  
PINK LAFFY TAFFY

## FAVORITE SPORTS TEAM:

ALABAMA

### FAVORITE DRINKS

MUDSLINGER PINK  
COLADA, DUTCH BRO  
DIRTY SODA OR  
FLAVORED GREEN TEA

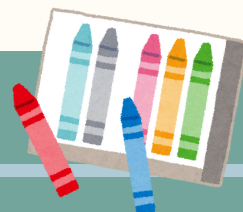


### FAVORITE FLOWER

DAISIES & TULIPS (BUT  
ALSO TERRIBLE WITH  
PLANTS)



FAVORITE COLOR: BLUE



FAVORITE SCENT: LIGHT, CLEAN



ALLERGIES: NONE