

# GSES TEACHER/STAFF FAVORITE THINGS!

ELIZABETH DAVEY

JUNE 24



## FAVORITE RESTAURANTS

PF CHANGS, JIM 'N  
NICKS, LONGHORN



## FAVORITE STORES

AMAZON, WALMART



## FAVORITE PASS TIMES:

HIKING,

## FAVORITE SNACKS

CHOMPS STICKS, DARK  
CHOCOLATE, SIMPLY  
CHEETOS, PRETZELS



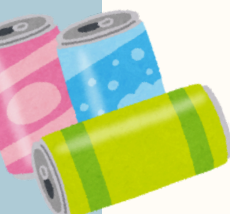
## FAVORITE CANDY

REESE'S CUPS AND  
REESE'S PIECES

## FAVORITE SPORTS TEAM: UNIVERSITY OF TENNESSEE VOLUNTEERS!

## FAVORITE DRINKS

ALANI, HINT WATER,  
DIET DR. PEPPER

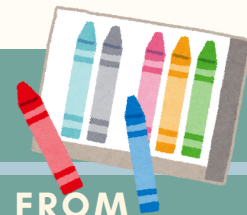


## FAVORITE FLOWER

ANY



FAVORITE COLOR: HOT PINK



FAVORITE SCENT: WARM LEATHERED AMBER FROM  
WALMART OR ANYTHING "MANLY"



ALLERGIES: NONE