

# GSES TEACHER/STAFF FAVORITE THINGS!

ALISON JOHNSON

05/23/1979



## FAVORITE RESTAURANTS

CHIK FIL A , ROSIE'S



## FAVORITE STORES

TARGET



## FAVORITE PASS TIMES:

READING, HIKING

## FAVORITE SNACKS

CHEX, POPCORN

## FAVORITE CANDY

TWIX, SNICKERS, SKITTLES



## FAVORITE SPORTS TEAM:

NA

## FAVORITE DRINKS

ICE COFFEE, DIET COKE

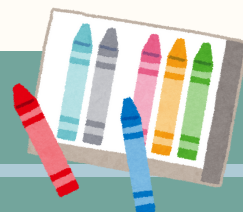


## FAVORITE FLOWER

ANY!



FAVORITE COLOR: BLUE



FAVORITE SCENT: SWEET DESSERT SCENTS



ALLERGIES: NONE